

- Beaker for BIOBEAM 2000/3000 -



BB17-6

Height:	247 mm
Beaker Diameter:	132 mm
Volume:	1,7 l



BB17-11

Height:	247 mm
Beaker Diameter:	132 mm
Animal Irradiation:	



BB28-2

Height:	247 mm
Beaker Diameter:	132 mm
Volume:	2,8 l



BB37-12

Height:	247 mm
Beaker Diameter:	140 mm
Volume:	3,2 l

- Beaker for BIOBEAM 8000 -



BB13-5

Height:	292 mm
Beaker Diameter:	100 mm
Volume:	1,3 l



BB18-1

Height:	292 mm
Beaker Diameter:	100 mm
Volume:	1,8 l



BB40-7

Height:	292 mm
Beaker Diameter:	175 mm
Volume:	4,0 l



BB51-8

Height:	292 mm
Beaker Diameter:	192 mm
Volume:	6,1 l



BB51-9

Height:	292 mm
Beaker Diameter:	192 mm
Volume:	5,1 l



BB51-10

Height:	292 mm
Beaker Diameter:	192 mm
Animal Irradiation:	



BB60-3

Height:	292 mm
Beaker Diameter:	175 mm
Volume:	6,0 l



BB75-4

Height:	292 mm
Beaker Diameter:	192 mm
Volume:	7,5 l

- Inserts for Beaker -



BB500

Description: Rodent-Insert (picture incl. partition for 3 animals)

Height:	33 mm
Diameter:	123,5 mm

recipient, partition, lid



BB500-01

Description: Rodent-Insert (picture incl. BB501-01)

Height:	42 mm
Diameter:	184 mm

recipient, lid, optional partition



BB501-01

Description: Partition for 4 animals

Height:	30 mm
Diameter:	177 mm



BB501 02

Description: Partition for 3 animals

Height:	30 mm
Diameter:	177 mm



BB502

Description:
Retaining Rod for
Rodent-Insert

Height: 130 mm

Diameter: 65 mm



BB502-01

Description:
Retaining Rod for
Rodent-Insert

Height: 184 mm

Diameter: 65 mm



BB503

Description:
Add-on Weight (400 g)

Height: 5 mm

Diameter: 120 mm



BB500-02

(picture incl. BB500-05 lid with
filter)

Description:
Rodent-Insert (Nalgene 1000ml)

Height: 140 mm
(with lid 150 mm)

Diameter: 120 mm



BB500-03

(picture incl. BB500-05 lid with
filter)

Description:
Rodent-Insert (Nalgene 500ml)

Height: 80 mm
(with lid 90 mm)

Diameter: 120 mm



BB500-08

Description:
Partition for BB500-02
(4 sections)



BB500-09

Description:
Partition for BB500-02
(3 sections)



BB500-10

Description:
Partition for BB500-03
(4 sections)



BB510-01

Description:
Reception for Centrifugal tube
15 ml

Height: 174 mm

Diameter: 94 mm



BB510-02

Description:
Reception for Centrifugal tube
50 ml

Height: 174 mm

Diameter: 94 mm

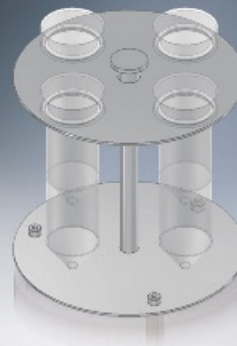


BB510-11

Description:
Reception for Centrifugal tube
15 ml

Height: 132 mm

Diameter: 125 mm

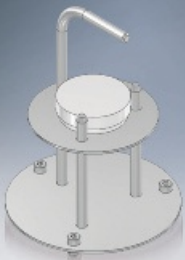


BB510-12

Description:
Reception for Centrifugal tube
50 ml

Height: 132 mm

Diameter: 125 mm

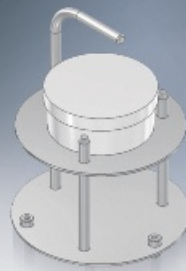


BB511-01

Description:
Reception for Petri dish 40 ml

Height: 131 mm

Diameter: 94 mm



BB511-02

Description:
Reception for Petri dish 60 ml

Height: 131 mm

Diameter: 94 mm



BB511-11

Description:
Reception for Petri dish 40 ml

Height: 131 mm

Diameter: 94 mm

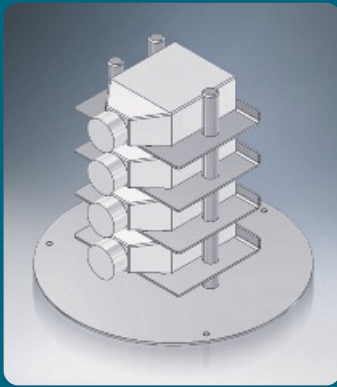


BB511-12

Description:
Reception for Petri dish 60 ml

Height: 131 mm

Diameter: 125 mm

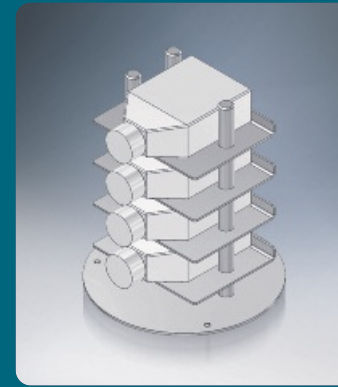


BB512-01

Description:
Reception for rectangular bottle
35 ml

Height 150 mm

Diameter 169 mm

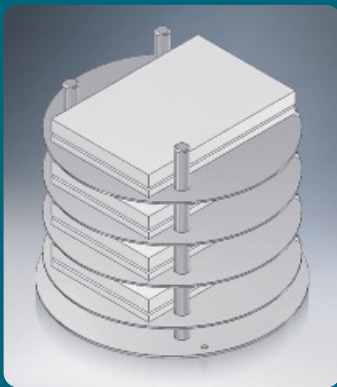


BB512-11

Description:
Reception for rectangular bottle
35 ml

Height 150 mm

Diameter 125 mm



BB513-01

Description:
Reception for cell structures

Height 150 mm

Diameter 169 mm



BB700

Description:
Plexiglass container for mice

Height 60 mm

Diameter 185 mm

5 chambers at approx. 70 ml,
lid with holes



BB100

Description:
Retrieval Aid for Beaker