

### Inserts for Beaker



#### BB500

Description:  
Rodent-Insert (picture incl.  
partition for 3 animals)

Height: 33 mm

Diameter: 123.5 mm

recipient, partition, lid



#### BB502-01

Description:  
Retaining Rod for  
Rodent-Insert

Height: 184 mm

Diameter: 65 mm



#### BB503

Description:  
Add-on Weight (400 g)

Height: 5 mm

Diameter: 120 mm



#### BB500-02

Description:  
Rodent-Insert  
(Nalgene 1000 ml)

Height: 140 mm  
(with lid 150 mm)

Diameter: 120 mm



#### BB500-03

Description:  
Rodent-Insert  
(Nalgene 500ml)

Height: 80 mm  
(with lid 90 mm)

Diameter: 120 mm



#### BB500-08

Description:  
Partition for BB500-02  
(4 sections)



#### BB500-09

Description:  
Partition for BB500-02  
(3 sections)



#### BB500-10

Description:  
Partition for BB500-03  
(4 sections)

# GSR C1

## ACCESSORIES



### BB510-11

Description:  
Reception for  
Centrifugal tube 15 ml

Height: 132 mm

Diameter: 125 mm



### BB510-12

Description:  
Reception for  
Centrifugal tube 50 ml

Height: 132 mm

Diameter: 125 mm

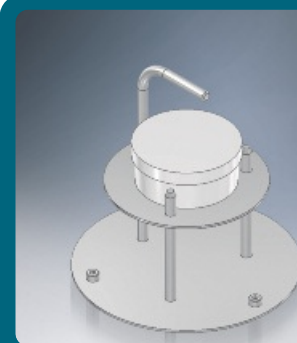


### BB511-11

Description:  
Reception for  
Petri dish 40 ml

Height: 131 mm

Diameter: 125 mm

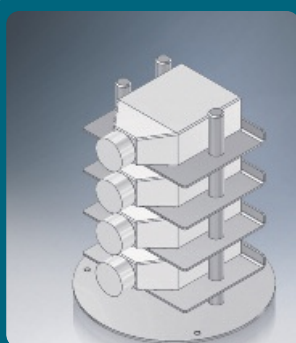


### BB511-12

Description:  
Reception for  
Petri dish 60 ml

Height: 131 mm

Diameter: 125 mm



### BB512-11

Description:  
Reception for  
rectangular bottle 35 ml

Height: 150 mm

Diameter: 125 mm